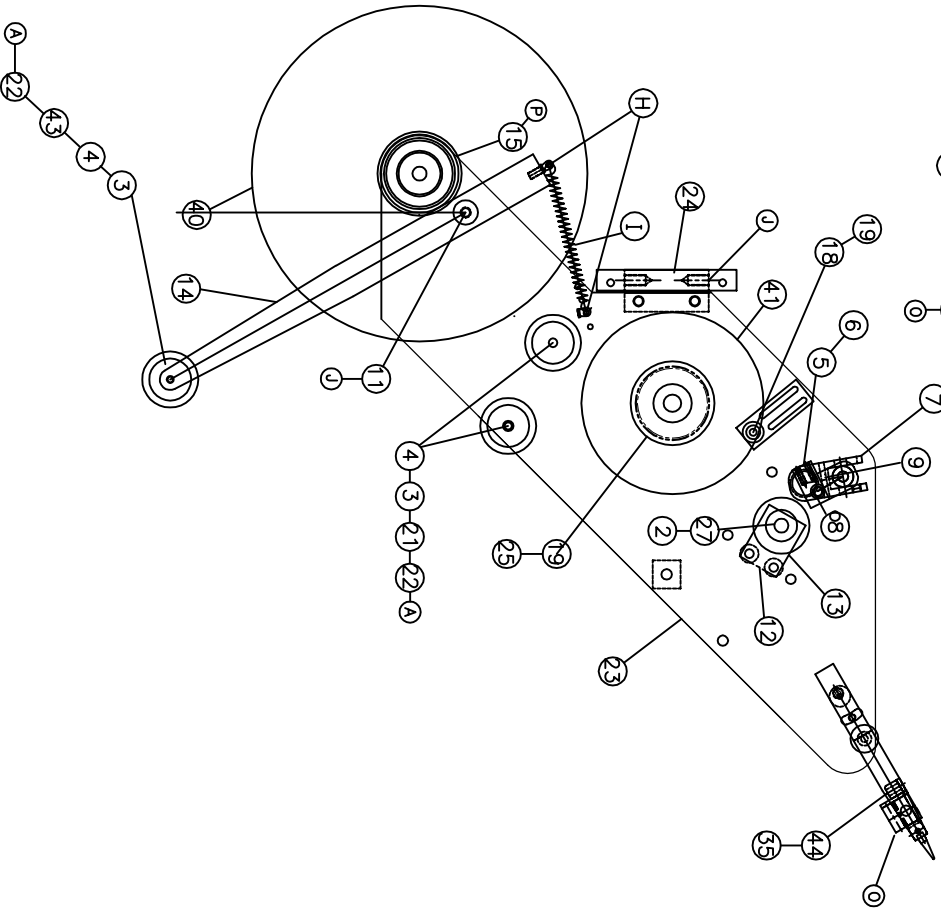


# LABEL STATION ASSY

P-794

4.5" HEIGHT SHOWN



P--794

LABEL STATION ASSY

4.5" HEIGHT SHOWN

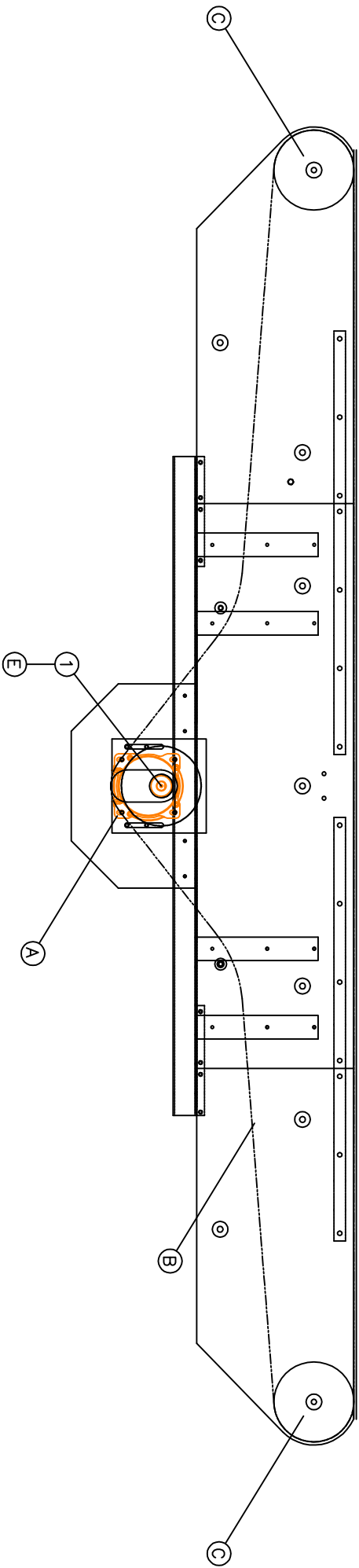
REF #	PART #	QNTY	DESCRIPTION
1	W150036	2	ANGLE ADJUST. BRACKET
2	W2086X45	1	APPLICATOR ROLL
3	W500116XL	6	GUIDE ROLL CLIPS
4	PD0109	3	GUIDE ROLLER BASE
5	W2249	1	PINCH ROLL ASSY BASE
6	W2250	1	PINCH ROLL STOP
7	W2251X45	1	PINCH ROLL SHAFT
8	W2252AX45	1	PINCH ROLL
9	W2253	1	PINCH ROLL HOLDER
10	W2269	1	PINCH GRIP HANDLE
11	W2277	1	DANCER ARM BUSHING
12	W2288	1	APPL. SHAFT HOLD DOWN
13	W2290	1	APPL. SHAFT BEARING PLT
14	W68158	1	DANGER ARM STRAIGHT
15	W500024B	1	FEED REEL HUB
16	W500116-75	1	GUIDE CLIP 3/4" ID
17	W500062A	1	FEED REEL SHAFT
18	W68241	1	CLUTCH TENSION ANGLE
19	W68242	1	TENSION ROLLER
20	W68015	1	TAKE-UP PIN
21	PD0103X45	2	GUIDE ROLLER POST
22	PD0102X45	3	GUIDE ROLLER
23	W68105	1	LABEL STA. PLT
24	W6802	1	LABEL STA. PIVOT BAR
25	W6803	1	WEB REWIND ROLL "
26	W6804	1	WEB REWIND POST
27	W68030X45	1	APPLICATOR SHAFT "
28	W150034S	1	ANGLE ADJ. BAR

REF #	PART #	QNTY	DESCRIPTION
29	W68111	1	PEEL TIP ASSY BASE
30	W68048X45	1	PEEL TIP ASSY ROLL 4.5"
31	W68053RL	1	PEEL TIP ASSY TOP BAR
32	W68052RL	1	PEEL TIP ASSY BOT. BAR
33	W68050X45	1	PEEL TIP MOUNT
34	PSC794.31	1	PEEL TIP 4.5"
35	W68054R/L	1	PHOTO-EYE BRACKET
36	W68162X45	1	PEEL TIP POST.
37	W68015	1	TAKE-UP LOCK PIN
38	W68047X45	1	PEEL TIP POST.
39	W68119	1	TAKE-UP ROLL.
40	WD031	1	FEED REEL PLATE
41	WD032	1	TAKE-UP REEL PLATE
42	WD084	1	DUAL PIVOT PLT
43	W68113X45	1	DANGER ARM ROLL 4.5"
44	W68056	1	PHOTOEYE KNOB
45	W68049X45	1	PHOTO EYE SLIDE
46			
47			
48			
49			
50			
51			
52			
53			

P-794

LABEL STATION ASSY 4.5" HEIGHT SHOWN

REF #	PART #	QNTY	DESCRIPTION
A	PSX1095	3	GUIDE RETAIN CLIP
B	X21705	4	BUSHING .5 ID THOMPSON
C	PSX1125	1	BELT 18" XL
D			
E	PSX962-YAS110V	1	WEB FEED MOTOR
F	PSX658	1	FL.BEARING 3/8IDx1 1/8
H	PSX547	2	EYEBOLT (FOR SPRING)
I	PSX858	1	DANCER ARM SPRING
J	X70675	3	.5 DIA. 1.0 LG. SHLDR BLT
K	PSX962-1YAS110V10:1	1	GEARHEAD
L	PSX1126	1	TIMING PULLEY 1/5 SLIP
M	X71958	2	3/8x1.00 SHDR BLT.
N	X71900	2	3/8x.75 SHLDR BOLT
O	PSX711	1	PHOTO-EYE (GAP)
P	PSX984	1	O-RING BRAKE
Q	PSX727	2	FL.BEARING 3/8IDx. 875OD
R			
S			
T			
U			
V			

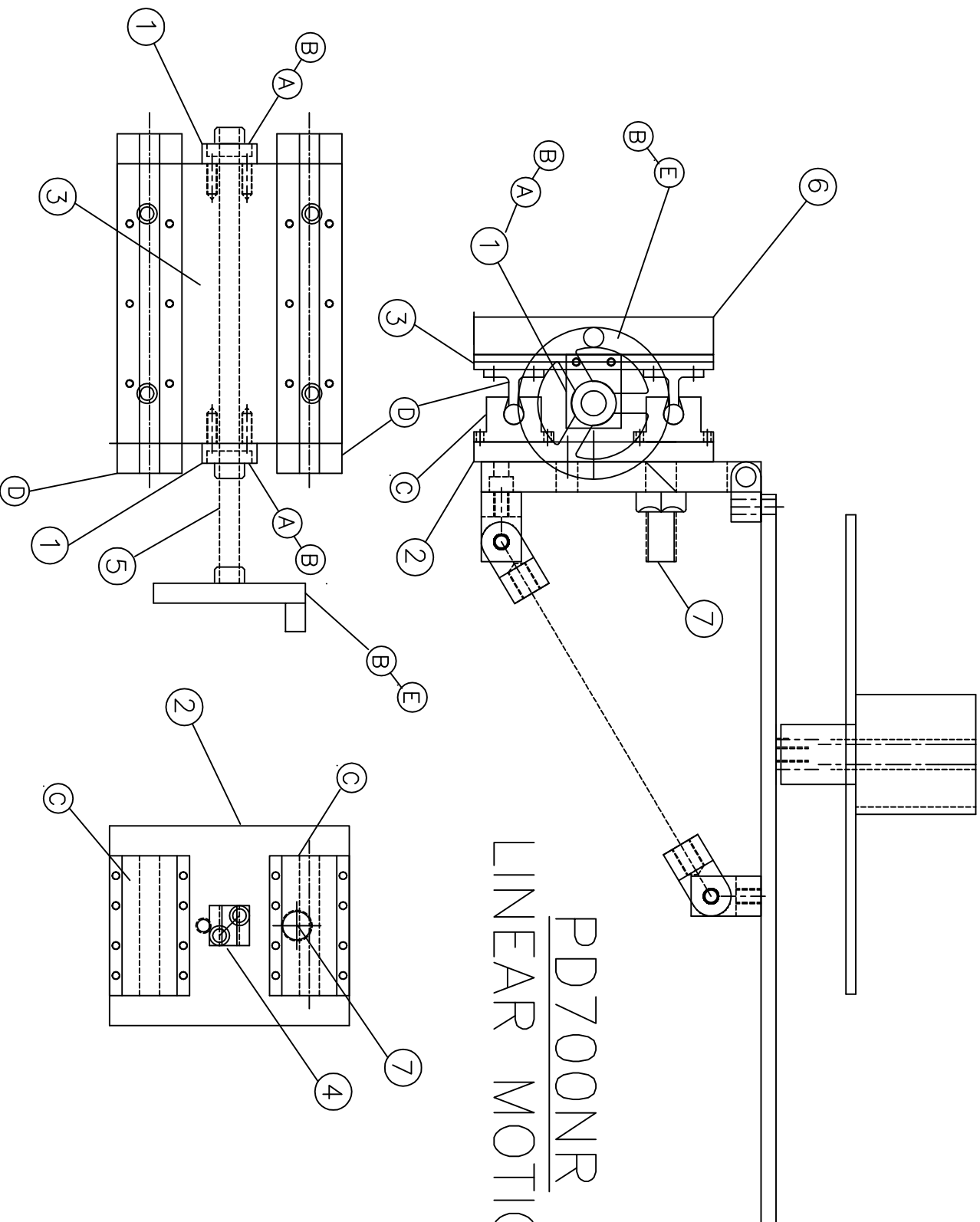


PD700NR  
CONVEYOR ASSY

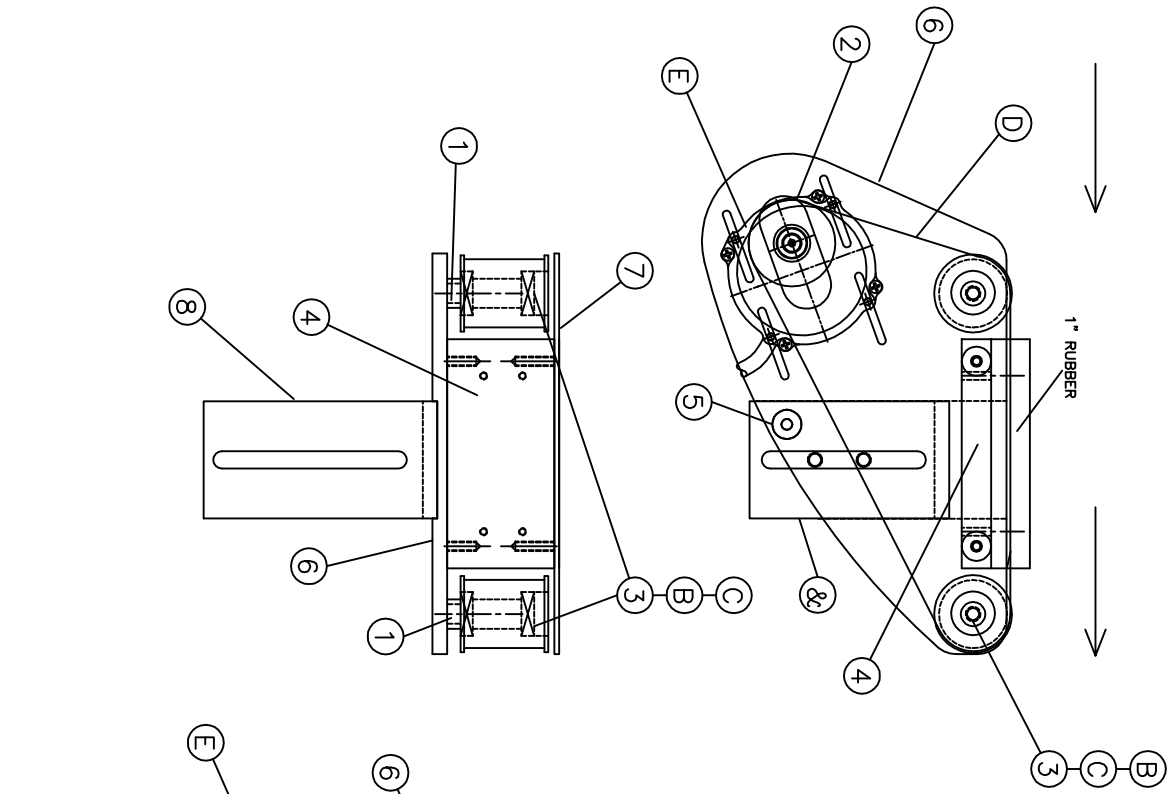
WebMaster PD700NR  
CONVEYOR ASSY

REF #	PART #	QNTY	DESCRIPTION
1	W6803-.75	1	CONVEYOR MOTOR
A	PSX1161	1	CONVEYOR MOTOR
B	PSX512	16	CONVEYOR CHAIN 4.5
C	PSX231	2	CONVEYOR IDLER
D			
E	PSX044	1	CONVEYOR DRIVE SPROCKET
F			
H			
I			
J			
K			
L			

# PD700NR LINEAR MOTION

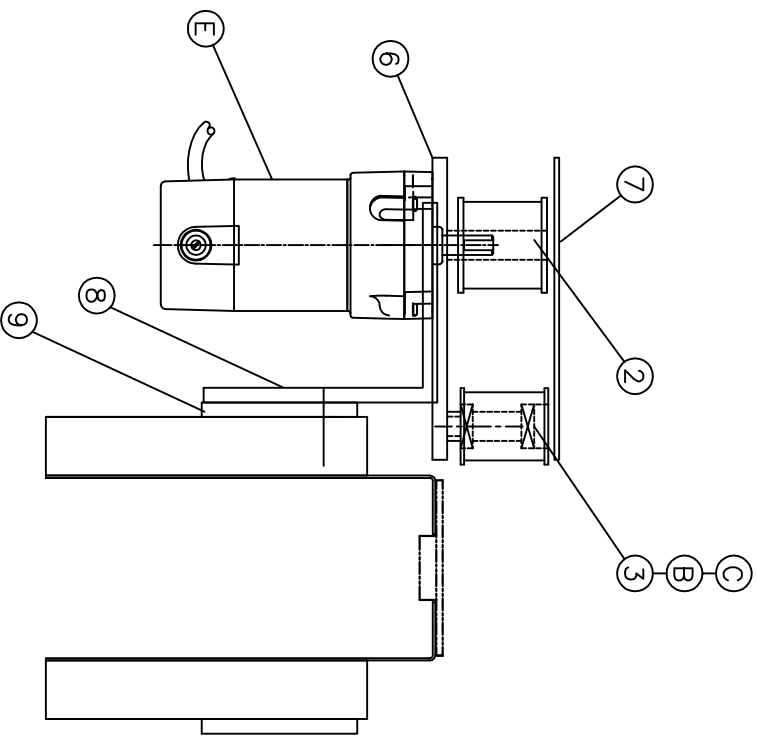






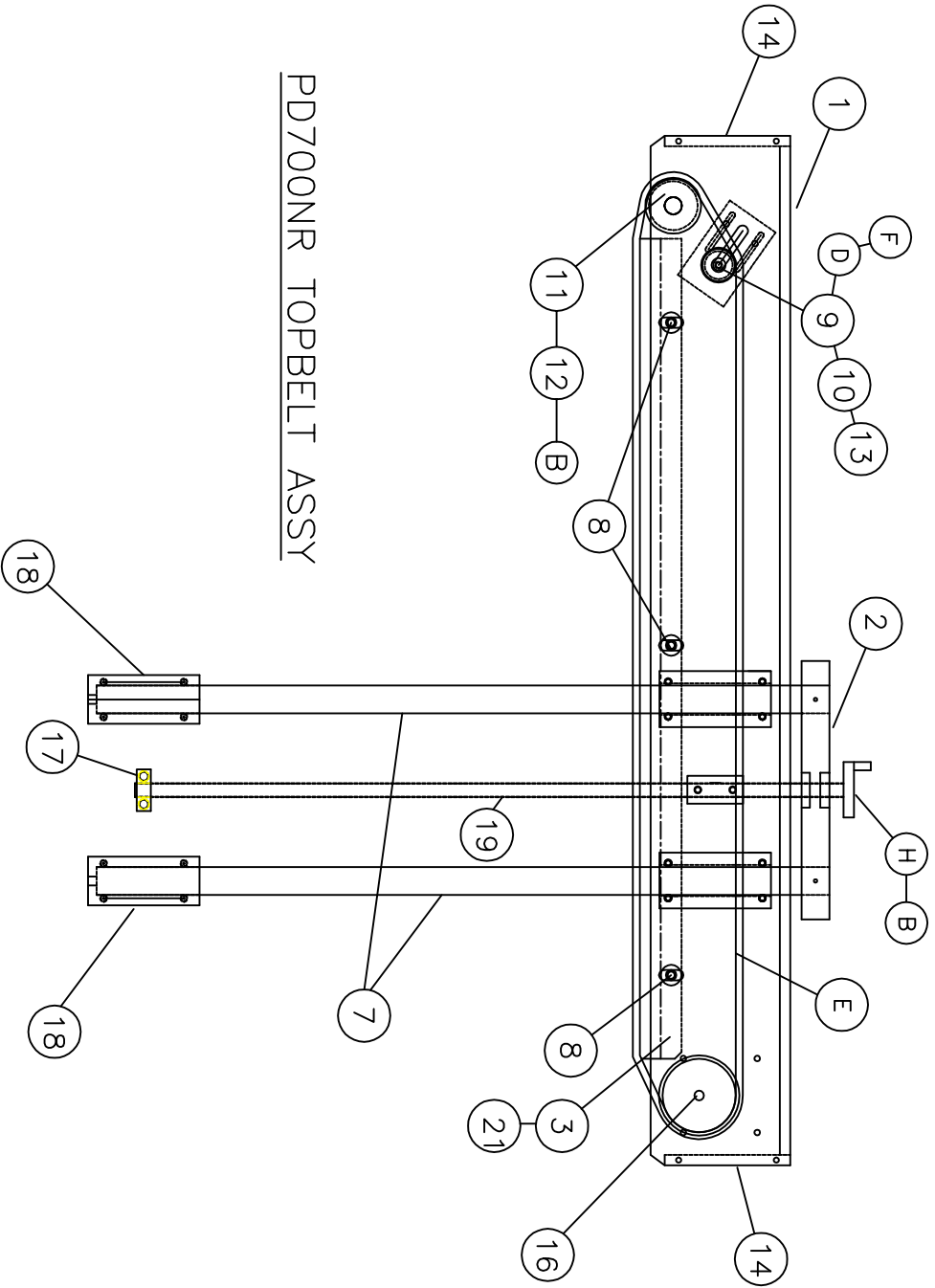
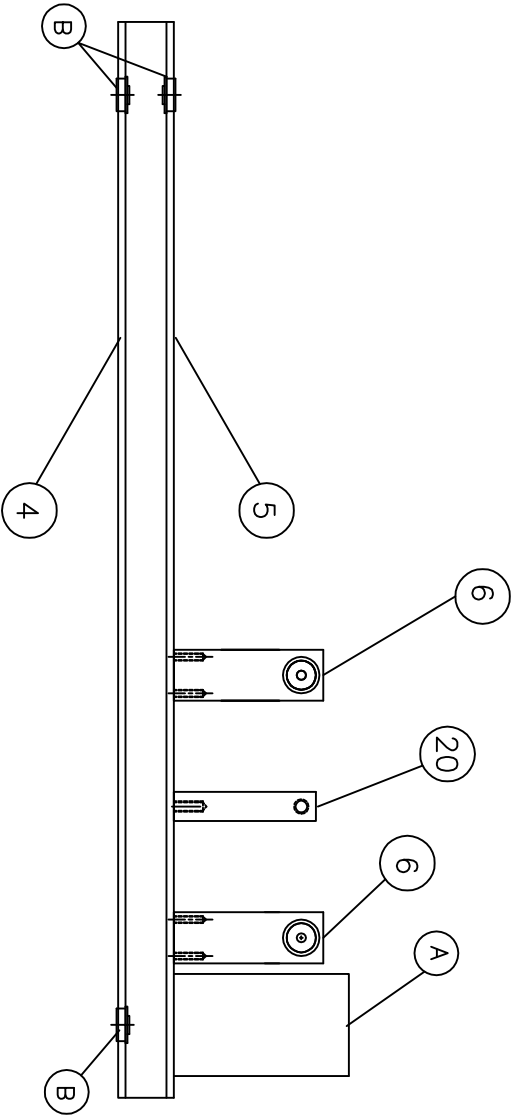
SPACING-BELT ASSY

PD700NR





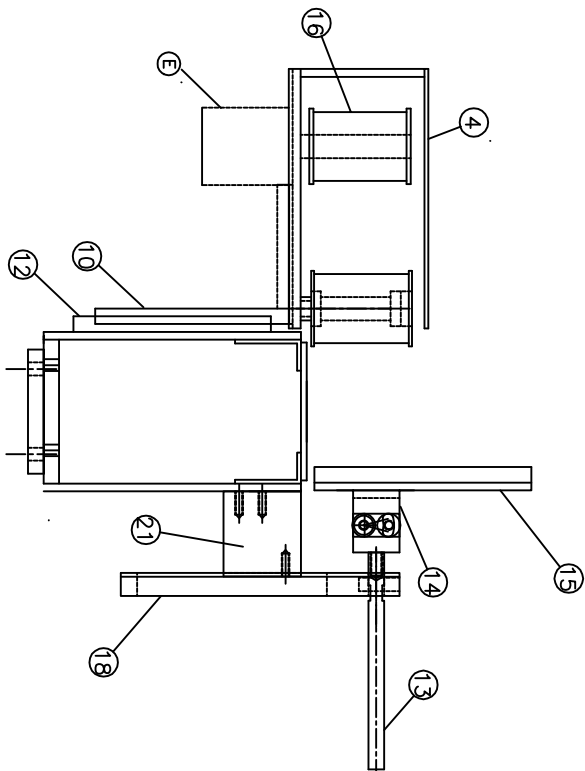
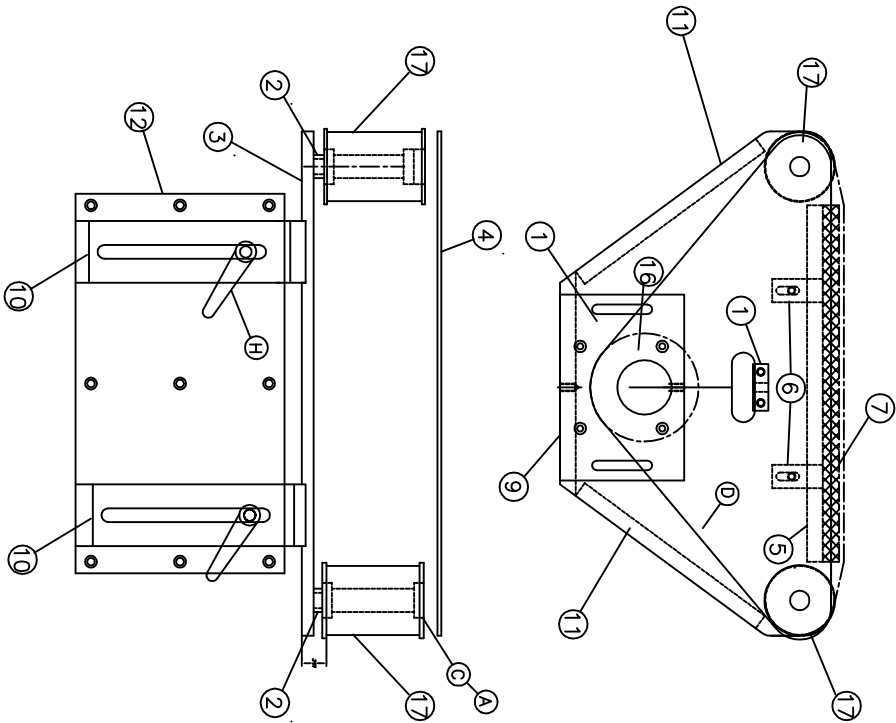
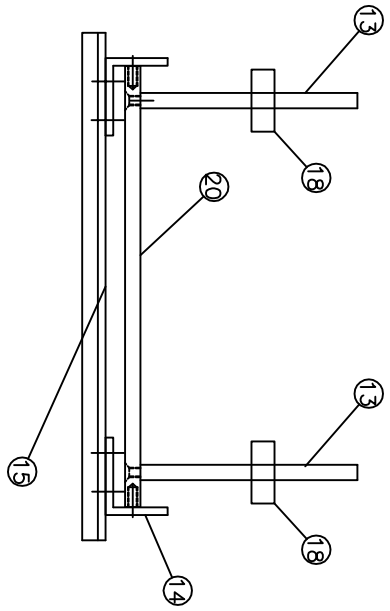




PD700NR TOPBELT ASSY



SPIN-BELT ASSY 3"  
PD700NR



PD700NR

3" WRAP STATION

REF #	PART #	QNTY	DESCRIPTION
1	PSC474.7	1	SPIN BELT JACK PLT
2	W150060	2	SP.BELT IDLER SPACER
3	W150061A	1	SP.BELT BASE PLATE
4	W150062	1	SP.BELT COVER PLATE
5	W68016T	1	SP.BELT BACK-UP PLATE
6	W150064	2	SP.BELT SIDE TABS
7	W68017T	1	SP.BELT BK GUIDE PLATE
8	W68084	1	SPINBELT MOTOR PLT
9	W150067T	1	SP.BELT ASSY BACK PLATE
10	W150069A	2	SP.BELT BASE BRACKET
11	W150072T	2	SP.BELT ASSY SIDE PLATE
12	W150073	1	SP.BELT ASSY GUIDE PLATE
13	W2125	2	SP.BELT BACK PAD SHAFT
14	W68066	2	PIVOT BRACKET
15	W68065	1	BACK PAD
16	W2115T	1	SP.BELT DRIVE PULLEY
17	W2189T	2	SP.BELT IDLER PULLEY
18	W2353	2	BACK PAD BRACKET
19	W68065	1	RUBBER PAD PLATE
20	W68067	1	HORIZ FRONT PLR
21	W68117	2	BACK PAD BRACKET
22			
23			
24			
25			
26			
27			
28			

REF #	PART #	QNTY	DESCRIPTION
A	PSX549	2	1/2 SHLDR BOLT 3.25 LG.
B			
C	X24056	4	1/2" ID BEARING
D	PSX743PAD	1	TIMING BELT
E	PSX457-125	1	MOTOR
F			
H	PSX186	4	3/8-16 CLAMPING HANDLE
I			
J			
K			
L			
M			
N			
O			
P			
Q			
R			
S			
T			
U			
V			
W			
X			
Y			
Z			
AA			
BB			
CC			